

THE RANGE

MIDDLE EAST AND AFRICA



CONTENTS

TRACTORS FROM 35 TO 600HP	4	HAY AND FORAGE EQUIPMENT	16	PLANTERS	26
STEIGER / QUADTRAC AFS CONNECT	5	SELF-PROPELLED WINDROWERS	17	EARLY RISER PLANTERS	27
MAGNUM ROWTRAC AFS CONNECT	6	DISC MOWERS	17	PRECISION DISK 500T AIR DRILL	27
MAGNUM AFS CONNECT	6	MOWER CONDITIONERS	17	TILLAGE EQUIPMENT	28
MAGNUM AFS CONNECT EDITORIAL	7	WHEEL RAKES	17	HEAVY-OFFSET 790 DISK HARROW	29
PUMA / PUMA CVT	8	SMALL SQUARE BALERS	18	TRUE-TANDEM DISK HARROWS	29
MAXXUM	8	LARGE SQUARE BALERS	18	ECOLO-TIGER DISK RIPPER	29
FARMALL M	9	ROUND BALERS	18	TIGER-MATE 255 FIELD CULTIVATOR	29
FARMALL JX	9	CONTENT TO BE ADVISED	19	NUTRI-PLACER / NUTRI-TILLER	29
FARMALL JXM	10	SPECIALTY HARVESTERS	20	SPEED-TILLER 475	29
JX STRADDLE	10	SUGAR CANE HARVESTERS	21	AFS AND TELEMATICS	30
JX 95 HIGH CLEARANCE	10	COTTON PICKER	22	CONTENT TO BE PROVIDED	31
JXT	11	COFFEE EXPRESS	22	CONTENT TO BE PROVIDED	32
JXT COMPACT	11	CONTENT ON COFFEE AND COTTON	23	THE TOP PERFORMERS AD	33
COMBINES FROM CLASS 4 TO 9	12	SPRAYERS	24	AFTERSALES SOLUTIONS	34
AXIAL-FLOW COMBINES	13	PATRIOT SPRAYERS	25	CONTENT TO BE PROVIDED	35
HEADERS	14				
AXIAL-FLOW 150 SERIES AD	15				

CASE IH HERITAGE

CASE IH REPRESENTS MORE THAN 180 YEARS OF INDUSTRY EXPERIENCE.

WITH A GLOBAL PRESENCE IN MORE THAN 160 COUNTRIES, WE ARE RECOGNIZED TODAY AS A GLOBAL LEADER IN POWERFUL, RELIABLE AND HIGHLY EFFICIENT EQUIPMENT THAT HELPS PROFESSIONAL FARMERS MEET THE CHALLENGES OF MODERN FARMING.

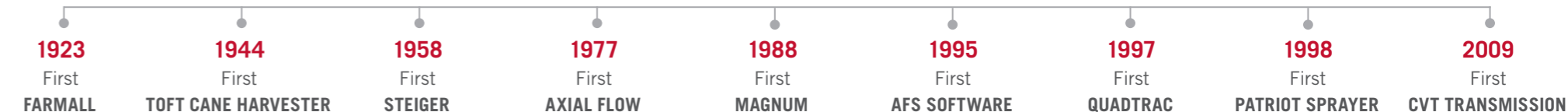
At Case IH, our mission is to support you as you grow food, fiber and fuel for the world. We bring you innovative products and market leading technology and agricultural

solutions and services to increase productivity. We take on challenges for you. We make life easier for you. We provide you with peace of mind. That's what we do. We're Case IH.

In addition, you manage one of the most elaborate and complicated journeys from your farm to the rest of the world around you – or far away. Nobody understands that journey better than Case IH and we want to be your preferred partner.



THE NAMES YOU KNOW ...





TRACTORS FROM 35 TO 600HP

CASE IH OFFERS A WIDE VARIETY OF TRACTORS, WHICH ARE GROUPED INTO 'FAMILIES' SUCH AS FARMALL, MAXXUM, PUMA, MAGNUM AND STEIGER. THESE FAMOUS NAMES ARE TESTAMENT TO CASE IH'S PROUD HERITAGE OF DELIVERING EFFICIENT AND POWERFUL TRACTORS TO CUSTOMERS AROUND THE WORLD.

Case IH has always been at the forefront of innovation and over the course of the company's existence, we have changed the face of agriculture industry many times. All that to make the life of farmers easier and their yields higher.

STEIGER / QUADTRAC AFS CONNECT

9 models from 406 to 608 hp

PUT A MASTER OF PRODUCTIVITY IN YOUR FIELD

STEIGER 400, 450, 500, 550, 600 QUADTRAC 450, 500, 550, 600

- Customized for tillage, planting, seeding, land leveling and tile plow operations
- Powered by a high pressure common rail 12.9 litres-FPT engine featuring a two-stage turbo, Tier 2 emission level
- Up to 670 hp maximum boosted power
- 16x2 Full Powershift
- Up to 428 l/min max. hydraulic pump flow
- Up to 8 rear remote valves
- Fuel saver Automatic Productivity Management (APM)
- Quadtrac – exclusive 4 tracks system for minimum soil compaction
- Scraper version for scraping applications
- AccuGuide precision guidance, Telematics and ISOBUS



MAGNUM ROWTRAC AFS CONNECT

6 models from 311 to 400 hp

URNS LIKE WHEELS, FLOATS LIKE TRACKS

MAGNUM 310, 340, 400 ROWTRAC MAGNUM 310 CVT, 340 CVT, 380 CVT ROWTRAC

- Proven track design to protect your soil and increase your pulling capacity
- Various Axle spacing options available to adapt to your crop in program
- Up to 435 hp maximum boosted power
- Powered by a high pressure common rail 8.7 litres-FPT engine, Tier 2 emission level
- Full Power Shift and CVT continuously variable transmission
- Fuel saver Automatic Productivity Management (APM)
- Up to 297 l/min max. hydraulic pump flow
- AccuGuide precision guidance, Telematics and ISOBUS



MAGNUM AFS CONNECT

8 models from 250 to 400 hp

BIG PERFORMANCE, HIGH VALUE

MAGNUM 250, 280, 310, 340, 400

- Up to 435 hp maximum power
- Powered by a high pressure common rail 8.7 litres-FPT engine, Tier 2 emission level
- 19x4 or 23x6 creeper gear Full Powershift transmission, 40 kph Eco or 50 kph
- Fuel saver Automatic Productivity Management (APM)
- Up to 297 l/min max. hydraulic pump flow
- AccuGuide precision guidance and ISOBUS connectivity

MAGNUM 310 CVT, 340 CVT, 380 CVT

- Up to 435 hp maximum boosted power
- Powered by a high pressure common rail 8.7 litres-FPT engine, Tier 2 emission level
- CVT continuously variable transmission
- Fuel saver Automatic Productivity Management (APM)
- AccuGuide precision guidance, Telematics and ISOBUS



MAGNUM AFS CONNECT: NEXT LEVEL DATA MONITORING AND MANAGEMENT WITH NEW CAB COMFORT

Wireless connectivity allows for instant communication and two-way data transfer between machine and manager / New full-length door, cab interior, instrumentation, Multicontroller armrest for enhanced operating ease / New brake-assisted steering / Technology from Autonomous Concept Vehicle includes advanced lighting and cameras for ultimate safety / Range extended with new Magnum 400 PowerDrive increasing max power up to 435hp.

Case IH has launched the seventh generation of its flagship conventional tractor; the new Magnum AFS® Connect.

The launch comes three decades after the first Magnum tractor was unveiled to the world's farmers, with over 150,000 Magnum tractors having been set to work in farms around the world since then.

External updates include a full-length door and new styling and lighting, but some of the most significant upgrades are inside the cab and the tractor itself, resulting in a tractor that helps the operator and owner manage farming operations with new levels of precision and connectivity.

In 1995, AFS (Advanced Farming Systems) set the industry benchmark for precision farming. 'AFS Connect' is Case IH's telematics solution, which is now an integral part of the new Magnum itself. That's why 'AFS Connect' is part of the tractor's name.

The range has been extended with the introduction of the Magnum 400 with PowerDrive transmission for even heavier and more demanding applications. This new model is rated at 400 horsepower with a maximum of 435 horsepower.

DESIGNED IN RESPONSE TO CUSTOMER FEEDBACK

"The new Magnum development began when we set out to research and understand what users today are looking for in this class and size of tractor, spending time with farmers across the world to maximise our understanding of their needs and requirements," said Aron Oechsner, Case IH Global Product Manager for Magnum.

"It was an exercise that involved manufacturing, marketing and quality standards staff not just from the Magnum plant in Racine, USA, but also from Case IH around the world, enabling them to exchange and compare ideas around what was important in different countries and global regions, from North America to South Africa to Australia and beyond.

"From this we tested concepts both in the 3D design facility at our Burr Ridge research and development site in Illinois, USA, and out in the field. The result is a new range that recognises the broad needs of farmers across those regions, and while it meets the requirements of those innovative, forward-thinking farmers who are exploiting the potential of new precision technology, it does so in a way that retains ease of operation for those who may be less technology-minded," he said.

WHAT'S NEW

Apart from the visible facelift, it's the Magnum's new level of connectivity that presents the biggest upgrade in the latest series.

Contained within its redesigned cab and controls, AFS Connect provides the seamless, instant transfer and recording of tractor data.

This includes everything from the location of the machine to how it is performing and what it may require such as fuel or upcoming maintenance. Data, such as area worked or application rates, is also recorded and transferred securely in real time.

A new two-way link between the new AFS Pro 1200 display inside the Magnum AFS Connect cab, and the AFS Connect portal provides the gateway to the management of data.

Secure wireless data transfer means no requirement for manual movement of data using USB memory sticks, eliminating the associated risk of loss or damage. Farm owners and managers can also then have the freedom to share selected agronomic data with third-party partners of their choosing – such as their agronomist – and tractor operating data with their dealer, to help identify service or operating issues and get the best from their machine.

AFS Connect technology also makes it possible for remote display viewing of the tractor's AFS Pro 1200 display, providing greater insight into what's needed to optimise operations, without physically needing to be in the tractor with the operator.

The cab interior of Magnum tractors has been revised, retaining familiar Case IH concepts such as pillar information displays and the Multicontroller



plus its armrest controls, but the enhanced execution of these controls and displays brings intuitive operation to new heights.

Alexey Savinov, Case IH Product Marketing Manager for Magnum in Asia, Middle East and Africa, says intuitive operation and operator comfort were vital considerations in designing the new series.

"Operator environment advances include a new swivel seat, improved aircon, heating and ventilation systems, and new car-style controls," Mr Savinov said.

"Even conveniences such as in-cab storage and charging and data ports have been considered, with a new full glass door and wiper option improving visibility.

"The new Magnum AFS Connect has a lot to offer—it really is a huge leap in tractor design—and we are very proud that it will now be available to farmers in South Africa," he said.

The range for Southern African markets includes the Magnum 280, Magnum 310, Magnum 340, Magnum 380 and Magnum 400 models – with maximum power outputs of 351, 382, 409, and 435hp respectively. The Magnum 400 is available with heavy duty 21/5 PowerDrive transmission. All models feature 8.7-litre FPT Industrial Cursor 9 six-cylinder turbocharged and intercooled engines.

The Magnum AFS Connect 340, 380 and 400 models can also be configured as the rear-tracked Rowtrac. The tractors maintain a rear lift capacity of up to 11,700kg while lift capacity of the optional front hitch is 4090kg. Up to six remote valves are available at the rear and three at the front.



PUMA / PUMA CVT

7 models from 142 to 224 hp

EFFICIENT POWER FOR PROFITABLE FARMING

PUMA 180, 210 PUMA 165 CVT, 195 CVT, 225 CVT

- Powered by a high pressure common rail 6 cylinder, 6.7 litres FPT engine, Tier 3 emission level
- Up to 251 hp maximum boosted power
- 18x6/19x6 Full Power Shift or CVT continuously variable transmission
- AccuGuide precision guidance and ISOBUS connectivity
- 120/150 litre CCLS pump



PUMA 140, 155

- Powered by a high pressure common rail 6 cylinder, 6.7 litres FPT engine, Tier 3 emission level
- Up to 193 hp maximum boosted power
- 18x6 or 19x6 Semi Powershift/Full Powershift transmission
- AccuGuide precision guidance and ISOBUS connectivity
- 113 litre CCLS pump



MAXXUM

7 models from 112 to 141 hp

MAXIMUM VERSATILITY, MULTI-PURPOSE WORKHORSE

MAXXUM 110, 125, 140

- 7 models in 3 different levels of comfort: Value Line, Limited and High
- Open Operator Platform (110, 125) or Cab (110, 125, 140)
- Powered by mechanical 4 and 6 cylinder FPT engines or 6 cylinder Common Rail (High models), Tier 3
- 24x24 HiLo or 16x16 Semi Power Shift transmission
- 80 l/min open center or 113 l/min CCLS hydraulic pump
- Up to 7,868 kg max. lift capacity



FARMALL M

Model with 110 hp

MAXIMUM VERSATILITY IN COMPACT FORM

FARMALL 110M

- Available with Cabin, 4WD
- Turbocharged and intercooler mechanical injection, Tier 3 engine
- 16x16 Semi Power Shift transmission with electro-hydraulic power shuttle
- 80 l/min open center hydraulic pump
- Up to 5,400 kg lift capacity
- 155 litre fuel tank capacity



FARMALL JX

Model with 110 hp

MULTI TASKING FLEXIBILITY

FARMALL 110JX

- Available with Cabin or with ROPS, 4WD
- Turbocharged and intercooler mechanical injection, Tier 3 engine
- Optional Hydraulic Power Shuttle
- Factory fitted front loader
- Up to 4,700 kg lift capacity
- 110 litre fuel tank capacity



FARMALL JXM

2 models from 80 to 90 hp
HIGH VERSATILITY, HIGH RELIABILITY

FARMALL 80JXM, 90JXM

- Flat deck, ROPS, 2WD/4WD
- Turbocharged and intercooler mechanical injection, Tier 3 engine
- Optional Hydraulic Power Shuttle
- Heavy duty straight rear axle
- 54 l/min open-centre hydraulic system
- 90 litre fuel tank capacity
- Up to 3,500 kg lift capacity (standard for 4 Wheel tractors)



JX STRADDLE

3 models from 80 to 98 hp
POWER, PERFORMANCE
AND TOUGHNESS

JX80, JX90, JX95 STRADDLE

- Straddle, ROPS, 2WD/4WD
- Mechanical injection, Tier 2 engine
- Mechanical Shuttle
- Up to 3,565 kg lift capacity



JX 95 HIGH CLEARANCE

1 model 98 hp
DESIGNED FOR VEGETABLE
AND SPECIALITY CROP

JX95 HIGH CLEARANCE

- Available with Cabin, 4WD
- 12x12 or 20x12 optional creeper
- Wheels 340/85R38
- 666 mm ground clearance



JXT

2 models from 55 to 75 hp
SIMPLE AND RELIABLE

JX55T, JX75T

- Straddle, ROPS, 2WD/4WD
Mechanical injection, Tier 1 / Tier 3 engine
- 8x2 or 12x3 Partial Synchromesh
- Up to 2000kg lift capacity



JXT COMPACT

3 models from 35 to 45 hp
POWER AND ECONOMY

JX35T, JX40T, JX45T COMPACT

- Straddle, ROPS, 2WD/4WD
- Mechanical injection, Tier 2 engine
- 8x2 or 8x8 Constant mesh transmission





COMBINES FROM CLASS 4 TO 9

WITH THE AXIAL-FLOW® RANGE AND A WIDE CHOICE OF HEADERS, THE CASE IH HARVESTING RANGE WILL CONSISTENTLY PERFORM AT HIGH CAPACITY WITH BEST QUALITY OUTPUT.

AXIAL-FLOW COMBINES

7 models from 210 to 634 hp
HARVEST YOUR SUCCESS

AXIAL-FLOW 4088

- Engine Tier 3
- NEF 6.7 litres
- Grain Tank 5,000 litres
- Unloading rate 45 l/s

AXIAL-FLOW 5150

- Engine Tier 3
- NEF 6.7 litres
- Grain Tank 9,200 litres
- Unloading rate 88 l/s

AXIAL-FLOW 7250

- Engine Tier 2
- Cursor 11 (11.1 litres)
- Grain Tank 11,100 litres
- Unloading rate 113 or 141 l/s

AXIAL-FLOW 9250

- Engine Tier 3
- Cursor 16 (15.9 litres)
- Grain Tank 14,400 litres
- Unloading rate 113 or 159 l/s

AXIAL-FLOW 6150 & 7150

- Engine Tier 3
- Cursor 9 (8.7 litres)
- Grain Tank 10,570 litres
- Unloading rate 113 l/s

AXIAL-FLOW 8250

- Engine Tier 3
- Cursor 13 (12.9 litres)
- Grain Tank 14,400 litres
- Unloading rate 113 or 159 l/s



HEADERS

The greatest choice of headers to give you the greatest yields.

Short description?



4400 CORN HEADER

■ from 6 to 16 rows



2030, 2060 AND 3050 GRAIN HEADER

■ from 15ft to 41ft

RICE HEADER also available

■ from 17ft to 24ft



3152 AND 3162 DRAPER HEADER

■ from 30ft to 45ft



3020 FLEX GRAIN HEADER

■ from 20ft to 35ft



3016 PICK-UP HEADER



**NEXT LEVEL POWER,
PRODUCTIVITY AND
EASE OF OPERATION**

AXIAL-FLOW 150 SERIES

PRODUCTIVITY REACHES NEW HEIGHTS

New Axial-Flow® 150 Series combines deliver all-time-high productivity, comfort, serviceability and reliability. The latest models feature enhanced engines for optimum fuel efficiency as well as power growth when it's needed, so harvesting and unloading can be maintained simultaneously, even in tough conditions. An advanced feeding system, large grain tank, and simplified straw management save you time in the field, while a new operator cab, four-speed electric shifting transmission and a completely new set of LED lights will enhance your driving experience.

For more information visit www.caseih.com or speak to your local authorised Case IH dealer.



caseih.com



HAY AND FORAGE EQUIPMENT

CASE IH HAY AND FORAGE RANGES INCLUDE BALERS, WINDROWERS, AND MOWER CONDITIONERS - AND THEY'RE DESIGNED TO HANDLE HEAVY CROPS WITH EASE.

SELF-PROPELLED WINDROWERS

1 model 186 hp

- Dual Speed Hydrostatic 0 - 39 kph



DISC MOWERS

7 models rotary and pull-type

- Cutting width 1.67 - 3.16 m
- Between 4 and 8 discs
- 2 knives / disc



MOWER CONDITIONERS

4 models rotary disc & sicklebar type

- Cutting width 2.80 - 4.90 m
- Between 7 and 10 discs
- 2 knives / disc



WHEEL RAKES

3 models trailing and carted

- Working width 5.30 - 9.20 m
- Between 8 and 12 wheels
- 40 tines / wheel



SMALL SQUARE BALERS

Model flow type

- Bale dimensions - width & height (cm): 36 x 46 - length (cm): 31 to 132
- Pick-up: width 1.91 m / Packer feeder



LARGE SQUARE BALERS

6 models - 3 sizes of bales

- Width & height (cm) 80 x 90 / 120 x 70 / 120 x 90
- Pick-up: width 2, 2.23 or 2.35 / Feeding type: Standard / Packer / Rotor Cutter
- High Density version on 120x90 model



ROUND BALERS

6 models rotor feeder - 4 rotor cutter

RB344 FIXED CHAMBER

- Bale dimensions (cm): 120 x 125 / Pick-up: width 2.00 m
- Feeder / Rotor-Cutter / Net or Twine Wrapping



RB455 - 465 VARIABLE CHAMBER

- Bale dimensions (cm): 120 x from 90 to 180
- Pick-up: width 2.05 or 2.35 m / Feeder / Rotor-Cutter
- Net or Twine Wrapping



RB545 FIXED CHAMBER

- Bale dimensions (cm): 122 x 125 / Pick-up: width 2.10 m
- Rotor-Cutter / Silage pack
- Net or Plastic Wrapping



NO STRAW LEFT BEHIND

HIGH SPEED PERFORMANCE

Maximize your harvest profit with proven hay and forage solutions from Case IH. With dozens of models of balers, mowers, conditioners and rakes to choose from, and a wide range of efficient, reliable and easy-to-drive tractors to match, you are sure to find the winning combination for your operation.

For more information visit www.caseih.com or speak to your local authorised Case IH dealer.



SPECIALTY HARVESTERS

EQUIPMENT BUILT TO PERFORM WITH THE SPEED AND EFFICIENCY THAT FARMERS DEMAND FOR A SUCCESSFUL HARVEST.

With the Sugar Cane Harvester, Cotton Picker and Coffee Express, the Case IH harvesting range will consistently perform at high capacity with best quality output. These machines are designed to streamline the harvesting process, improve harvest quality, productivity and increase operator comfort.

SUGAR CANE HARVESTERS

3 models from 176 to 415 hp

PIONEERING, REFERENCE AND LEADERSHIP IN
THE SUGAR AND ETHANOL MARKET



SUGARCANE HARVESTER A4000

- 5.8 litres / Tyres
- Suitable from 1 m row spacing

SUGARCANE HARVESTER A9000

- Cursor 11(11.1 litres), Tier 0, Tier 3 and Stage V, 310Kw (415 Hp)
- Suitable from 1,5 m row spacing

SUGARCANE HARVESTER A9900

- Cursor 11(11.1 litres), Tier0, Tier3 and Stage V, 310Kw (415 Hp)
- Suitable from 1,5 m row spacing

BOOSTING SUGAR PRODUCTIVITY SINCE 1944

It's a commitment to innovation that has spanned generations. A deep understanding of the sugarcane industry and a belief that we can always get better, more efficient. With each development we boost productivity and improve the lives of sugarcane farmers throughout the world. New solutions and technologies such as AFS AccuGuide and yield monitoring are being constantly introduced, and we don't stop there. We support our customers with parts and service support, training and know-how, and expert dealers who care about your business. We stand beside you today, after more than 75 years, just as we did on the day the first Austoft® sugarcane harvester was released.



COTTON PICKER

1 model with 275 hp

MAXIMIZE PICKING EFFICIENCY

COTTON PICKER 420

- Engine 8.3 litres with Turbo-Aftercooler
- 4 rows / basket capacity: 3,856 kg



COFFEE EXPRESS

1 model - Self-propelled

VERSATILE HARVESTING

COFFEE EXPRESS 200

- Excellence in full and selective harvesting, preserving plant longevity
- Versatility and agility when harvesting in the most adverse conditions
- Lower operational costs



**QUALITY OF LIFE
STARTS FROM QUALITY OF HARVEST**

**PRODUCT QUALITY AND EASE OF HARVESTING
WITH THE COFFEE EXPRESS 200 MULTI**



SPRAYERS

THE CASE IH PATRIOT® SERIES SPRAYERS DELIVER QUALITY APPLICATION AT THE RIGHT TIME TO ENSURE CLEAN AND HEALTHY PLANTS MAXIMIZING THEIR YIELD POTENTIAL.

PATRIOT SPRAYERS

3 models with spraying capability from 36.5 m to 41.1 m
MAKE THE MOST OF EVERY PLANT'S POTENTIAL

PATRIOT SPRAYER 3250

- Tier 3 emission
- Engine 6.7 litres
- Tank size 3028/3785 l

PATRIOT SPRAYER 4350

- Tier 3 emission
- Engine 8.7 liters
- Tank size 4,542 l

PATRIOT SPRAYER 4450

- Tier 3 emission
- Engine 8.7 litres
- Tank size 6,065 l





PLANTERS

CASE IH OFFERS PLANTING AND SEEDING EQUIPMENT THAT HELPS YOU OBTAIN HIGHER YIELDS.

Our equipment provides you with the most accurate and precise planter technologies, along with high-capacity and consistent seed placement.

EARLY RISER PLANTERS

High-efficiency opens up your planting window
PRECISELY WHAT YOU NEED

2000 SERIES PLANTERS

- Rows 12, 16 and 24
- Spacing 30 in. (76.2 cm)



PRECISION DISK 500T AIR DRILL

Features an on-board mounted tank with seed metering, section overlap control, and unmatched maneuverability. Available in 30 and 40 ft toolbar widths.

PRECISION DISC DRILLS

- Toolbar width: 30-40 ft
- Transport height: 13-13,8ft (3,96-4,2m)
- Transport width: 12,5-18,5 ft (3,84-5,63 m)
- Road-to-opener clearance: 8.5 in (21.6 cm)
- Weight (empty): 19,000-26,500 lbs (8,700-12,020 kg)





TILLAGE EQUIPMENT

THE CASE IH SOIL MANAGEMENT LINEUP DELIVERS RELIABLE RESULTS AND AGRONOMIC, RUGGED PERFORMANCE TO MEET YOUR NEEDS.

The full range of tillage equipment includes Heavy-Offset Disk Harrow, True-Tandem Disk Harrow, Ecolo-Tiger Disk Ripper, Tiger-Mate Field Cultivator, Nutri-Placer / Nutri-Tiller and Speed-Tiller Compact Disc.

HEAVY-OFFSET 790 DISK HARROW

12 models all-purpose or ploughing

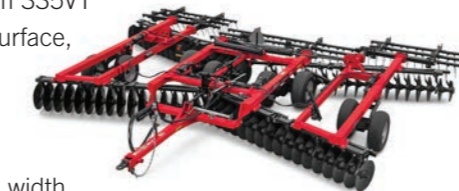
- 3.4 to 8.3 m working width
- 71 or 83 cm Earth Metal blades, solid or notched



TRUE-TANDEM DISK HARROW

Conventional or vertical tillage versions

- 8 models conventional True-Tandem 375 seedbed disc, 6.7 to 14.3 m working width, single or double fold
- 8 models vertical tillage True-Tandem 335VT seedbed disc, for flattest floor and surface, waved Earth Metal blades
- 7 models Min-Till True-Tandem 335 Barracuda disc harrow, aggressive toothed wave blades, 16.7 to 10.4 m width



ECOLO-TIGER DISK RIPPER

E-T 875 available in 4 models

- Operating Width: 4.26 to 7.92m
- Transport Width: 4.88. to 5.55m
- Number of Shanks: 7-13



TIGER-MATE 255 FIELD CULTIVATOR

17 models from 6.8 m to 16.3 m working width

- 3 types of sweeps, arranged in industry leading split-the-middle design
- Superb constant depth shank design



NUTRI-PLACER / NUTRI-TILLER

NH₃ fertilizer applicators

- Nutri-Placer 930 with high speed low disturbance row unit
- Nutri-Tiller 955 with no-till compaction shuttering, residue cutting shank/knife combination



SPEED-TILLER COMPACT DISC

Speed-Tiller 475 available in 4 models

- Operating Width: 6.25 to 12.5m
- Transport Width: 2.9 to 4.8m
- Number of Discs: 50-100





AFS AND TELEMATICS

AT CASE IH PRECISION FARMING IS KNOWN AS ADVANCED FARMING SYSTEMS (AFS).

Case IH was a pioneer in developing AFS technology and continues to be a market-leader for ease of use and productivity benefits. AFS tools include automated hands-free steering and guidance capabilities on tractors, combines and sprayers; prescription planting, mapping and variable rate technology capabilities on planters, sprayers and seeders; and more.



DISPLAYS

EASINESS AND TECHNOLOGY AT YOUR FINGERTIPS

Discover the wide range of our colour touchscreen monitors to optimise your workspace according to your needs. From the configurable AFS Pro 1200, to the interactive AFS Pro 700 and the retrofit solutions, you have the choice to enhance your comfort and efficiency.



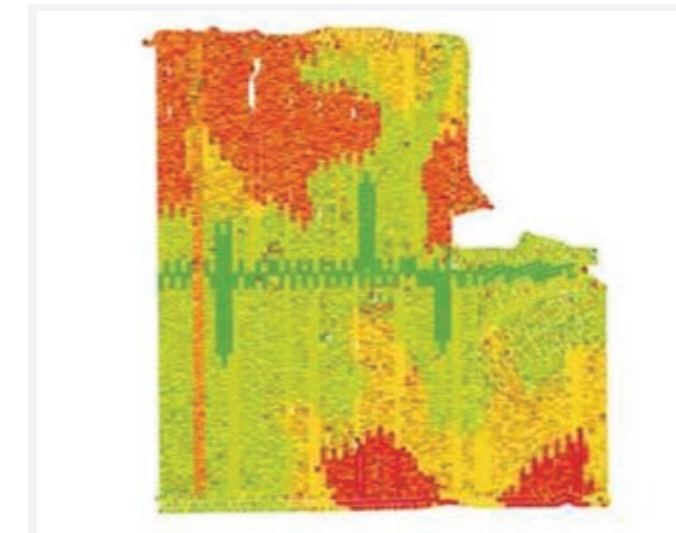
AFS SYSTEM

Case IH Advanced Farming Systems (AFS™) have been at the forefront of precision farming for more than a decade, giving farmers the ability to control the entire crop production cycle. Case IH AFS™ tools include everything you need to achieve repeatable accuracy down to 2.5 cm, reduce overlaps and cut input costs — and maximize your yield potential.



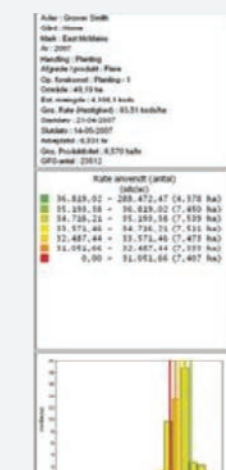
GUIDANCE & MACHINE CONTROL

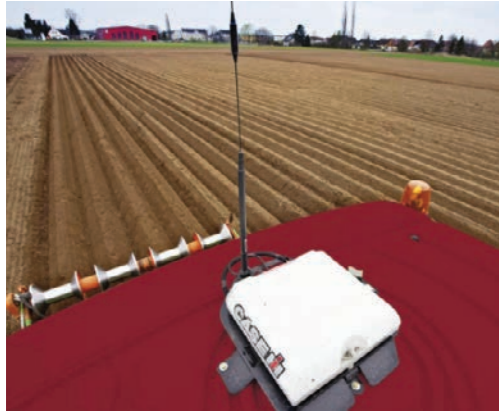
Advance your operation with Case IH auto guidance tools like AFS AccuGuide™ for tractors, combines and sprayers. Achieve year-to-year repeatable accuracy from sub-inch levels and beyond. By adopting autoguidance, you will reduce skips and overlaps; save on fuel and labor costs; better manage your seed, fertilizer and chemical inputs; simplify operation; and add hours to the day during critical operating windows.



SOFTWARE

Case IH AFS® desktop software offers the flexibility and analysis power to support all your precision farming needs. AFS generates yield maps, as-applied maps, prescription maps and more from a single, integrated software package. This software also offers soil sampling maps, the ability to create and print reports, as well as the option to import satellite imagery.





RECEIVERS

The opportunities and challenges impacting agriculture today and into the next decades mean we're farming in ways our grandfathers never imagined. With solutions such as new AFS Vector Pro, the AFS 372 GNSS receiver and AFS AccuStar modem, Case IH delivers the innovative precision farming solutions you need to connect your entire operation.



AFS ACCURACY

Fitting a GPS antenna to your machinery opens up Advanced Farming Systems capability to include guidance, automatic steering, sprayer boom control, yield mapping and much more. While satellite navigation in a car typically has a positioning accuracy of about 5m, Case IH AFS® equipment can achieve pass-to-pass accuracy levels down to 2.5cm.



CUSTOMER SUPPORT

When you buy a Case IH AFS product or system, you can be sure that you're not only buying the best product on the market, but you've got the best dealer support behind you. Case IH dealers can offer advice on selecting the right system for your equipment, will ensure they deliver what you need when you need it, and will then continue to support you and your equipment with the service, assistance and spare parts you'd expect from a name as trusted as Case IH.



FIELD SOLUTIONS

AFS Field Solutions bring you the tools needed to gather data and address problem areas within your fields.



AFS CONNECT™

AFS Connect™ lets you remotely monitor and manage your farm, fleet and data, allowing you to optimise your performance, productivity and flexibility. Efficiently visualise your equipment with little to no idle time. With all the information at your fingertips, you can successfully manage your operations anytime, anywhere!



THE TOP PERFORMERS

PRODUCTIVITY FOR ALL APPLICATIONS

Professional users opt for the innovation and nearly 180 years of tradition and experience of Case IH. Our tractors and harvesting technology, together with our global service network staffed by experienced distributors, provide our customers with an innovative service that enables the farmers of the 21st century to work more productively and more efficiently.

Case IH has the power to shape the future of agriculture. Our brand stands for power, tradition and productivity. We build superior equipment, create performance solutions and provide our customers with excellent support.

For more information visit www.caseih.com or speak to your local authorised Case IH dealer.



BE A FARMER, WE TAKE CARE OF THE REST.

Assistance and support

The Case IH commitment is to be there for owners when they need aftersales advice. That's why we have put together a comprehensive service package for our customers. We build on a strong local network in order to be there as quickly as possible in an emergency, and offer you a comprehensive customer service program. These services range from technical support, advice regarding AFS questions, pending service checks, and organisation and provision of the right spare parts, through to the correct financing of your Case IH product. Everything tailored to your needs and our products – just as services should be.

GENUINE PARTS

WE KEEP YOUR EQUIPMENT RUNNING.

Your local Case IH dealer is highly trained to give you expert advice and solve problems, ensuring the correct, genuine Case IH parts are located and dispatched as soon as possible to keep your machine in top condition.



OPTIMAL FINANCING SOLUTION FOR EVERY INVESTMENT

CNH Industrial Capital is the financing company for Case IH. Our employees are financial experts and have many years of experience in agriculture. We do not only know about Case IH products and the market - we also understand the individual requirements of your operations. Therefore we are always able to offer you a financial solution for your new investments that is tailored specifically to your operational requirements. Our most important goal is improving the profitability of your investments!



CASE IH



caseih.com

CNH INDUSTRIAL MIDDLE EAST AND AFRICA
Steyrer Strasse 32, St. Valentin, Austria 4300

Safety never hurts! Always read the Operator's Manual before working with any equipment. Inspect equipment before using it, and be sure it is operating properly. Follow the product safety signs, and use any safety features provided. This literature has been published for worldwide circulation. The standard and optional equipment and the availability of individual models may vary from one country to the next. Case IH reserves the right to undertake modifications without prior notice to the design and technical equipment at all times without this resulting in any obligation whatsoever to make such modifications to units already sold. Whilst every effort is made to ensure that the specifications, descriptions and illustrations in this brochure are correct at the time of going to press, these are also subject to change without prior notice. Illustrations may show optional equipment or may not show all standard equipment. Case IH recommends **AKCELA** lubricants.

Case IH Range Brochure – 10/22 | Code 22AMEACOMRAN001

CASE IH